

**sarens**

**www.sarens.pl**

# SARENS POLSKA

Sp. z o.o.

## SOCHACZEW baza

ul. INŻYNIERSKA 28  
96-502 SOCHACZEW  
tel.: +48 46 863 16 26  
fax.: +48 46 863 17 02  
e-mail: serwis@sarens.pl

## WARSZAWA oddział

ul. PRZEJAZDOWA 22A  
05-800 PRUSZKÓW  
tel.: +48 22 728 15 25  
fax.: +48 22 758 70 25  
e-mail: info@sarens.pl

## RADOM oddział

LOGISTYKA & TRANSPORT  
ul. 1905 Roku 21 lok 34  
26-600 RADOM  
Tel.: +48 48 363 10 36  
Fax.: +48 48 340 00 43  
E-mail: logistyka@sarens.pl

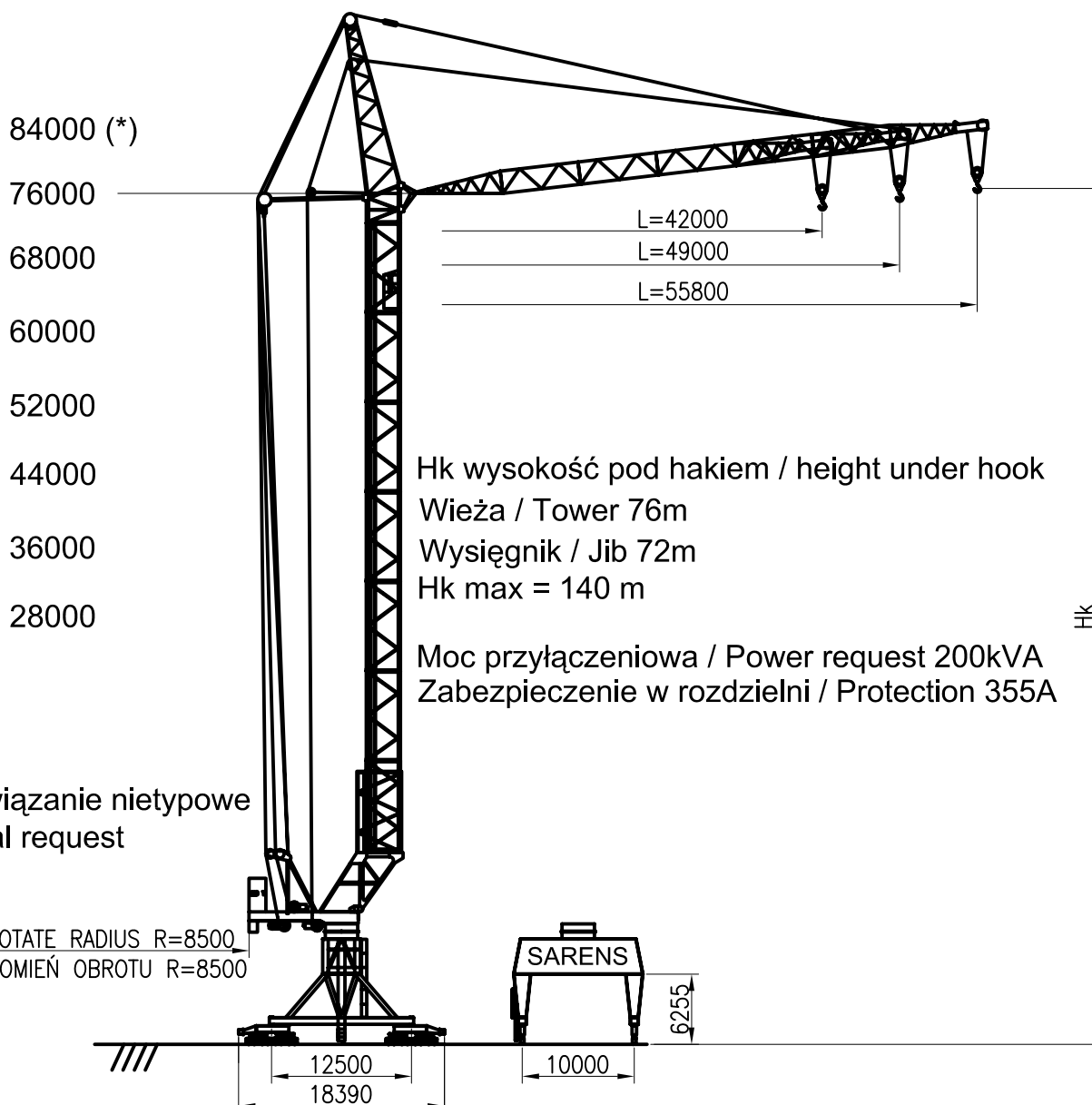
## GDAŃSK oddział

ul. OLSZYŃSKA 3  
80-734 GDAŃSK  
Tel.: +48 58 301 42 22  
Fax.: +48 58 320 11 33  
E-mail: gdansk@sarens.pl

# PEINER VM-1300

# 58.5 TON

1/125



(\*) rozwiązanie nietypowe / special request



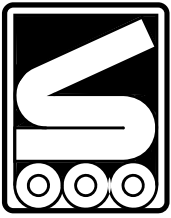
# PEINER VM-1300

58.5 TON

## UDŹWIGI / WORKING RANGES

Radius	Wysięgnik/jib						Radius
	L1	L2	L3	L4	L5	L6	
Promień pracy	Ilość pasm liny/number of rope lines						Promień pracy
	4	4	3	2	2	2	
m	Maksymalny promień/max radius						m
	t	t	t	t	t	t	
19.1	58.5						19.1
20.0	57.3	-					20.0
21.6	55.0	50.0	-				21.6
24.0	51.6	47.2	36.4	-			24.0
26.5	48.0	44.3	34.8	29.3	-		26.5
28.7	44.8	41.7	33.3	28.3	21.6		28.7
30.0	43.0	40.2	32.5	27.7	21.3	-	30.0
31.2	41.4	38.8	31.7	27.1	21.0	16.8	31.2
34.0	37.4	35.5	29.7	25.7	20.0	16.2	34.0
35.5	35.2	33.8	28.7	25.0	19.5	15.9	35.5
38.0	31.7	30.8	27.0	23.7	18.7	15.3	38.0
40.0	28.8	28.5	25.7	22.7	18.1	14.9	40.0
42.0	26.0	26.2	24.4	21.7	17.4	14.4	42.0
44.0	-	23.8	23.0	20.7	16.8	14.0	44.0
46.0		21.5	21.7	19.7	16.1	13.5	46.0
48.0		19.2	20.3	18.7	15.5	13.1	48.0
49.0		18.0	19.7	18.2	15.1	12.9	49.0
50.0		-	19.0	17.7	14.8	12.6	50.0
52.0			17.6	16.7	14.1	12.2	52.0
54.0			16.2	15.7	13.5	11.7	54.0
55.8			15.0	14.8	12.9	11.3	55.8
58.0			-	13.7	12.2	10.8	58.0
60.0				12.7	11.5	10.3	60.0
62.0				11.7	10.9	9.9	62.0
64.0				-	10.2	9.4	64.0
66.0					9.5	8.9	66.0
68.9					8.5	8.3	68.9
70.0					-	8.0	70.0
72.0						7.6	72.0
74.0						7.1	74.0
75.6						6.7	75.6

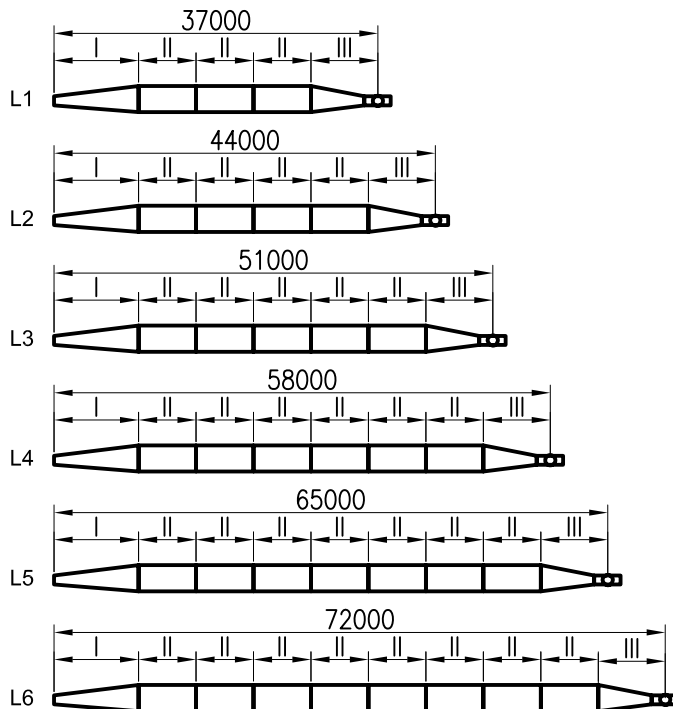
WORKING SPEEDS OF					
MAIN WINCH			JIB HEIGHT	TURN	TRAVEL
Number of lines	Speed [m/min]	Load [t]	[min]	[tr/min]	[m/min]
4	8,0	58,5	2,8	0,75	40,0
	16,0	28,4			
3	12,0	36,0			
	25,0	16,4			
2	20,0	22,0			
	40,0	9,6			
1	31,0	12,5			
	63,0	5,0			



# PEINER VM-1300

58.5 TON

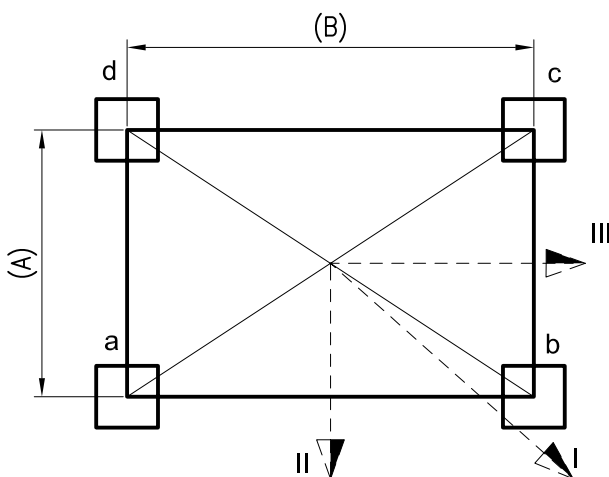
## KONFIGURACJE WYSIĘGNIKA / JIB COMBINATIONS



I = 8000 mm  
 II = 7000 mm  
 III = 8000 mm  
 IV = 7000 mm

## NACISKI PUNKTOWE / POINT GROUND FORCES

Work of tower crane is possible with wind speed until 55 km/h (15m/s)



A [m]	10,0
B [m]	12,5
L2 [m]	44,0
x [m]	0,598
y [m]	1,2
z [m]	2,40

Praca żurawia / Work of crane

Kierunki wysięgnika / Jib directions	I	II	III
a [kN]	1230	1450	330
b [kN]	2100	1870	1280
c [kN]	910	690	1810
d [kN]	40	260	860

Siła pozioma wiatru / wind horizontal force 53 kN

Żuraw niepracujący (wolny obrót) / Crane not work, free rotate

	I	II	III
a [kN]	1230	1450	330
b [kN]	2100	1870	1280
c [kN]	910	690	1810
d [kN]	40	260	860

Siła pozioma wiatru / wind horizontal force 91 kN

